



FUSIBILI TIPO gS

Caratteristiche generali:

- Tipo prodotto: fusibili a coltello;
- Dimensioni: NH-00C, NH-00, NH-1, NH-2, NH-3;
- Conformi alle norme: DIN 43620, IEC 60269-4;
- Corpo in steatite;
- Contatti in argento;
- Corrente nominale: da 16A a 630A;
- Tensione nominale: 690V AC;
- Potere di interruzione: 100kA;
- Confezione minima: 3 pezzi;

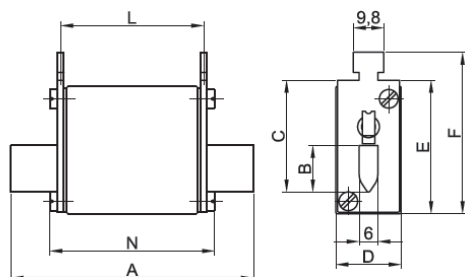
gS TYPE FUSES

General characteristics:

- Product type: blade type fuses;
- Dimensions: NH-00C, NH-00, NH-1, NH-2, NH-3;
- Conform to standards: DIN 43620, IEC 60269-4;
- Steatite body;
- Silver contacts;
- Rated current: from 16A to 630A;
- Rated voltage: 690V AC;
- Breaking capacity: 100kA;
- Minimum packaging: 3 pieces;

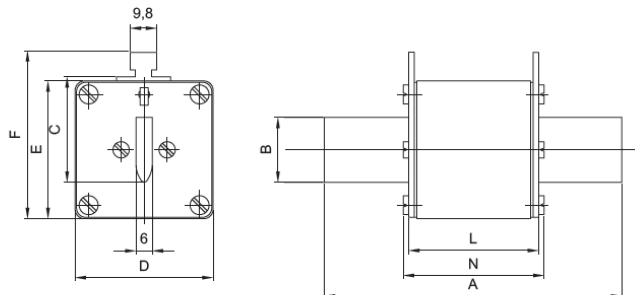
Disegno / Drawing

Dimensioni in mm fusibili NH-00C/00 - Dimensions in mm fuses NH-00C/00



size	A	B	C	D	E	F	L	N
00C	78	15	35	21	42	52	46	53
00	78	15	35	30	42	52	46	53
-	-	-	-	-	-	-	-	-

Dimensioni in mm fusibili NH-1/2/3 - Dimensions in mm fuses NH-1/2/3



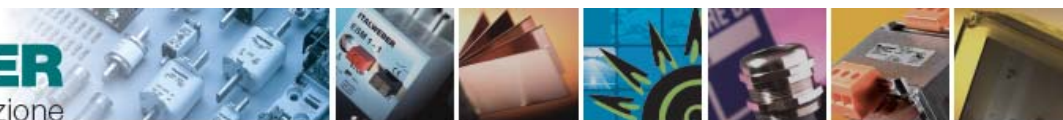
size	A	B	C	D	E	F	L	N
1	135	24	40	46	52	62	65	72
2	150	30	48	54	61	71	65	72
3	150	37	60	64	74	84	65	72

Pagine totali del documento: 4

Document total pages: 4

Ultimo aggiornamento: 1 Aprile 2014

Last update: 1st April 2014



Codici e caratteristiche tecniche:

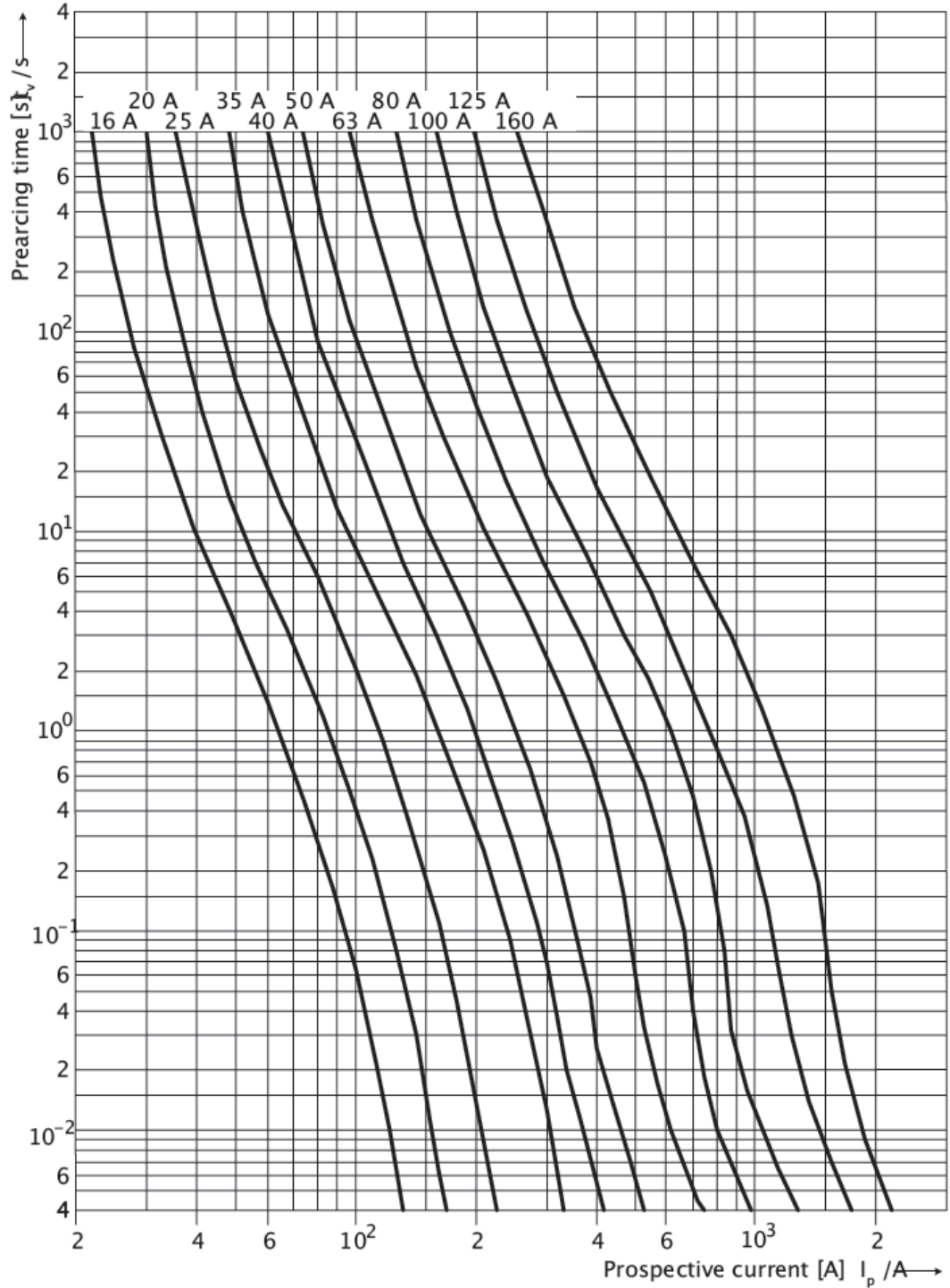
Codes and technical characteristics:

grandezza size	Codice code	In (A)	Vn (V)	P _w (W)	Total I ² t (A ² s)	conf. pack.
NH-00C	1564016	16A	690V	2,3	210	3
	1564020	20A	690V	3,3	440	3
	1564025	25A	690V	4,2	760	3
	1564035	35A	690V	5,2	1.680	3
	1564040	40A	690V	5,8	3.100	3
	1564050	50A	690V	6,2	4.500	3
	1564063	63A	690V	7,3	92.50	3
	1564080	80A	690V	8,1	18.300	3
	1564100	100A	690V	10,5	34.200	3
	1564125	125A	690V	11,7	64.500	3
NH-00	1564160	160A	690V	14	77.000	3
NH-1	1564200	200A	690V	26	101.000	3
	1564250	250A	690V	30	202.000	3
	1564315	315A	690V	36	312.000	3
NH-2	1564350	350A	690V	41	425.000	3
	1564400	400A	690V	45	585.000	3
	1564450	450A	690V	52	765.000	3
	1564500	500A	690V	56	970.000	3
NH-3	1564560	560A	690V	55	1.800.000	3
	1564630	630A	690V	57	2.300.000	3



**Curve caratteristiche tempo / corrente:
Fusibili NH-00C e NH-00**

**Time / current characteristic curves:
NH-00C and NH-00 fuses**





**Curve caratteristiche tempo / corrente:
Fusibili NH-1, NH-2 e NH-3**

***Time / current characteristic curves:
NH-1, NH-2 and NH-3 fuses***

